



adani  

---

Realty




# adani

---

## Realty



Adani Realty has been at the forefront of creating luxurious residential properties and state-of-the-art commercial properties in the top cities of the country.





## NATIONAL PRESENCE

We believe in leveraging our trusted brand value and delivering quality products in timely manner at good locations.




# adani

---

## Realty



With a commitment to getting India at par with the world, Adani Realty is one of the youngest arms of India's top infrastructure and development conglomerate - Adani Group.





adani  
Realty

And now Adani Realty brings a  
new lifestyle experience to Pune.

Image for representative purpose only.

A N E W B E G I N N I N G I N  
L U X U R Y A W A I T S Y O U



A place where you can experience  
life just how you imagined it.





How would you feel if life  
was just how you imagined it?

DREAM  
dream  
DREAM  
DREAM  
DREAM

Love

A place where you can  
choose to host lavish parties



A romantic dinner scene featuring a man and a woman seated at a table. They are both smiling and clinking their wine glasses, which are filled with a light-colored wine. The table is set with a white tablecloth, a lit candle in a glass holder, a bowl of food, and a small wooden container with utensils. The background is softly blurred, suggesting an indoor dining setting with warm lighting.

adani  
Realty

Explore an  
exciting urban lifestyle



adani  
Realty

Have a pool to  
cool off at your leisure

Image for representative purpose only.



Or just relax and enjoy a  
sunset surrounded by nature



Let us take you to your very own oasis.  
A place where you can create the life of your dreams.







Introducing  
ATELIER  
GREENS

DESIGN YOUR LIFE



A T E L I E R   G R E E N S



Atelier Greens has been thoughtfully designed to cater to you. The open spaces, luxurious amenities and homes are what you want them to be. Whether you prefer a Sunday Sundowner or a family games night, Atelier Greens offers the freedom and space to design your life the way you see it.



L O C A T I O N



The Location - Koregaon Park NX  
So well connected, every place feels like a neighbourhood.



- Well connected to Kalyani Nagar, Magarpatta City, Dhole Patil Road, Bund Garden Road, Viman Nagar
- Find easy access to M.G Road, Shivajinagar and Deccan.
- 6 km from Pune International Airport
- 4 km from Pune Railway Station

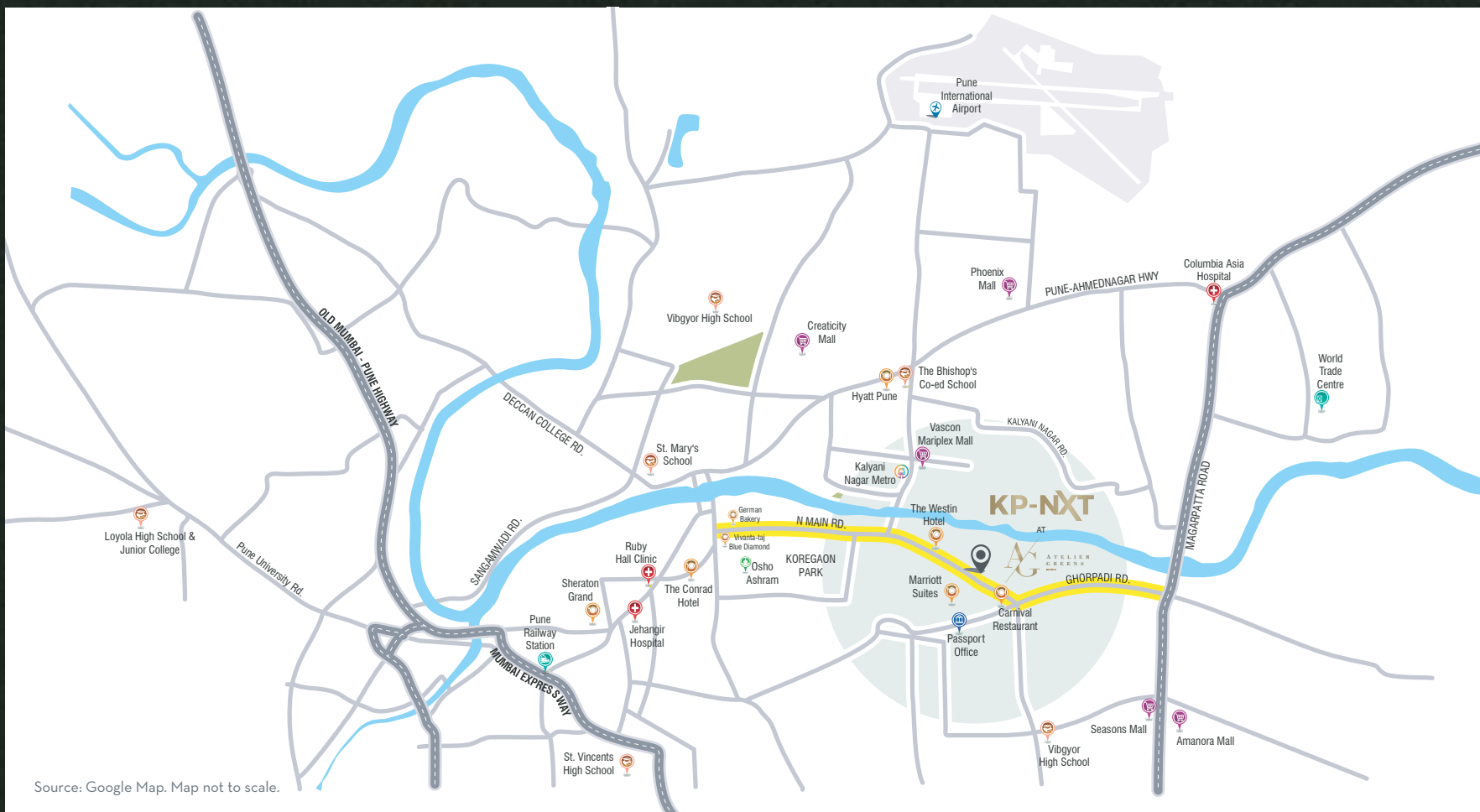


- 5 minutes
- 10 minutes
- 15 minutes



# LOCATION MAP

Adani Realty now ventures into Pune



EVERY URBAN NECESSITY  
WITHIN EASY REACH

adani  
Realty

**Schools**

1. Air Force School
2. VIBGYOR High School, Magarpatta
3. The Orbis School
4. St. Mary's School
5. St. Vincent's High School
6. Sanskriti School, Wagholi Campus
7. Loyola High School & Junior School
8. Lal Bahadur Shastri High School
9. Rosary School
10. The Bishop's Co-Ed School

**Malls**

1. Creaticity Mall
2. Vascon Mariplex Mall
3. Big Bazaar Retail Store
4. Seasons Mall
5. Amanora Mall
6. Nitesh Hub

**Hospitals**

1. Southern Command Hospital
2. Columbia Asia Hospital
3. Inamdar Multispeciality Hospital
4. Noble Hospital
5. Ruby Hall Clinic
6. Surya Sahyadri Hospital
7. Max Neuro Hospital

**Hotels**

1. The Westin Hotel
2. JW Marriott Hotel
3. Fairfield by Marriot
4. Radisson Blu
5. Royal Orchid Central
6. Hyatt Pune
7. Aurora Towers
8. Vivanta Blue Diamond
9. Sheraton Grand

I N S I D E H O M E  
H I G H L I G H T S



Design Your Life the way you want.



Welcome to the first  
steps to design your life.



100% EAST WEST  
FACING APARTMENTS.

The only spot where you  
catch the sunrise and the  
sunset: Your home.



## VASTU COMPLIANT RESIDENCES\*.

They say positive vibes are  
the secret to a happy home.

Image for representative purpose only.

\*Selective Apartments.

LARGE FRENCH  
WINDOWS.

Open your home to nature.



Image for representative purpose only.

## BALCONY SITOUTS<sup>^</sup>

Sit and watch the  
world go by.



Image for representative purpose only.

<sup>^</sup>As per the Terms of Agreement For Sale.





## KITCHEN

### A STUDIO FOR YOUR CULINARY INSPIRATION

Spacious and chic kitchen spaces, perfect to design your next gourmet masterpiece.

ARTISTS IMPRESSION. THE FURNITURE, FIXTURES AND FITTINGS ETC.  
ARE FOR REPRESENTATIVE PURPOSES AND DOES NOT CONSTITUTE PART OF  
THE FINAL PRODUCT OR ANY PART THEREOF.



## BATHROOM

### RELAX IN SPACIOUS LUXURY

Warm and luxuriant textures offer a sense of relaxation in spacious bathrooms.

ARTISTS IMPRESSION. THE FURNITURE, FIXTURES AND FITTINGS ETC. ARE FOR REPRESENTATIVE PURPOSES AND DOES NOT CONSTITUTE PART OF THE FINAL PRODUCT OR ANY PART THEREOF.

P R O J E C T H I G H L I G H T S  
& A M E N I T I E S



Design Your Life the way you want.





adani  
Realty

Step back and see  
the bigger picture.

Artists Impression



## VERTICAL GARDEN\*.

A wall of green to keep  
the city at bay.

Image for representative purpose only.

\*Green plants form part of balcony area, to be maintained by individual flat owners.

20-SEATER  
THEATRE ROOM\*.

Don't step out  
for movie nights.



Image for representative purpose only.

## BANQUET HALL

Be the host to  
grand celebrations.



Artists Impression

E X T R A   A C T I V I T I E S



Find spaces far removed from routine.







## 2 CLUBHOUSES (1 Indoor & 1 Outdoor)

Invigorate both body and  
mind with world-class  
recreational activities.

Artists Impression

OPEN AMPITHEATRE\*

Set the stage for  
the choicest of live  
experiences.



Image for representative purpose only.

NATURE WALK  
TRAILS

Take a stroll in  
nature's embrace.

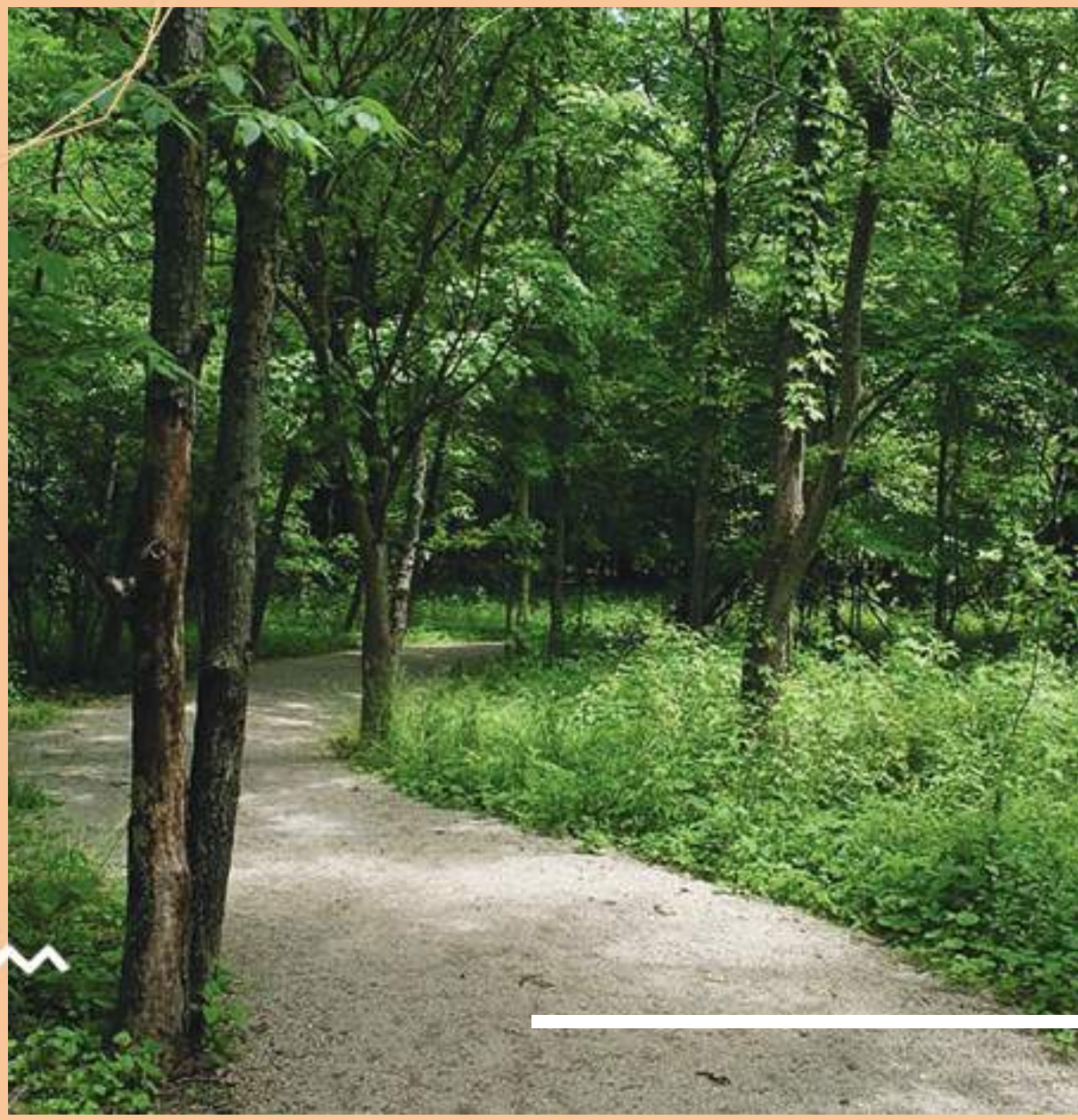


Image for representative purpose only.



## READING ALCOVE

Peace and quiet, the  
perfect setting to take  
in a story.

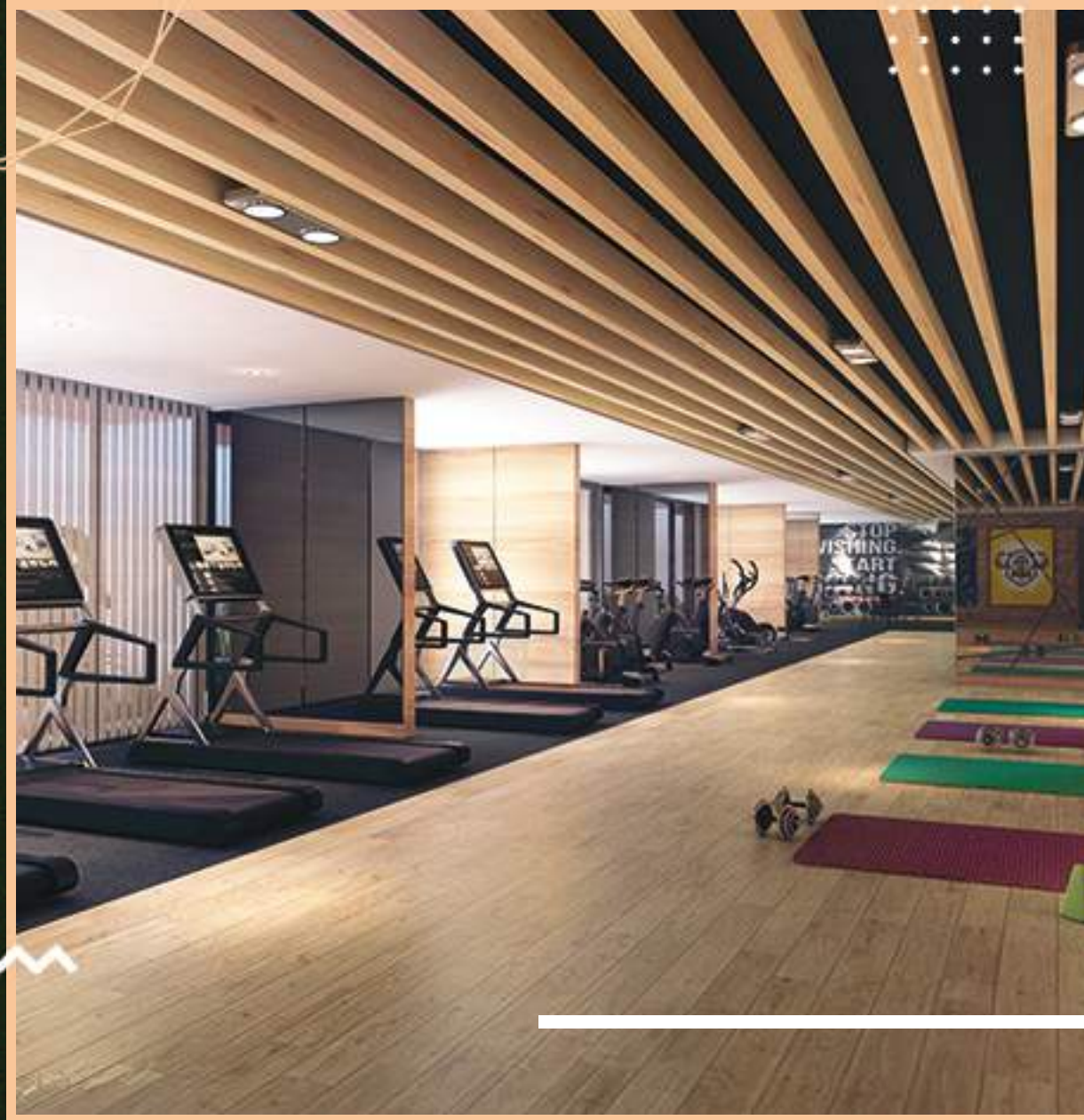
Image for representative purpose only.



Indulge in amenities  
that sooth and excite.

- Steam & sauna
- Locker Room
- Sit out corner

Image for representative purpose only.



- Gymnasium
- Indoor Games Room
- Yoga Room

Artists Impression



- Reflexology Path
- Kids' Play Area

Image for representative purpose only.

Discover features that go beyond your residence.

- Ample parking space
- Wi-Fi\* in common area
- Certified Green Building
- Rainwater harvesting
- Solar powered lights in common area
- 24X7 DG Power Back-up in lifts and lobbies



Artists Impression



## EXTERNAL FINISHES

Bask in a bold declaration  
of grandeur.



Artists Impression

S E C U R I T Y F E A T U R E S



Design Your Life the way you want.





Come home to  
peace of mind.

- Multi-tier Security
- Smart Card Access
- VDP with Intercom
- CCTV Surveillance in common area

Image for representative purpose only.

\*One card to be issued per flat. Additional cards on chargeable basis as per T&C of service provider.

N E W L I F E S T Y L E  
D E S T I N A T I O N

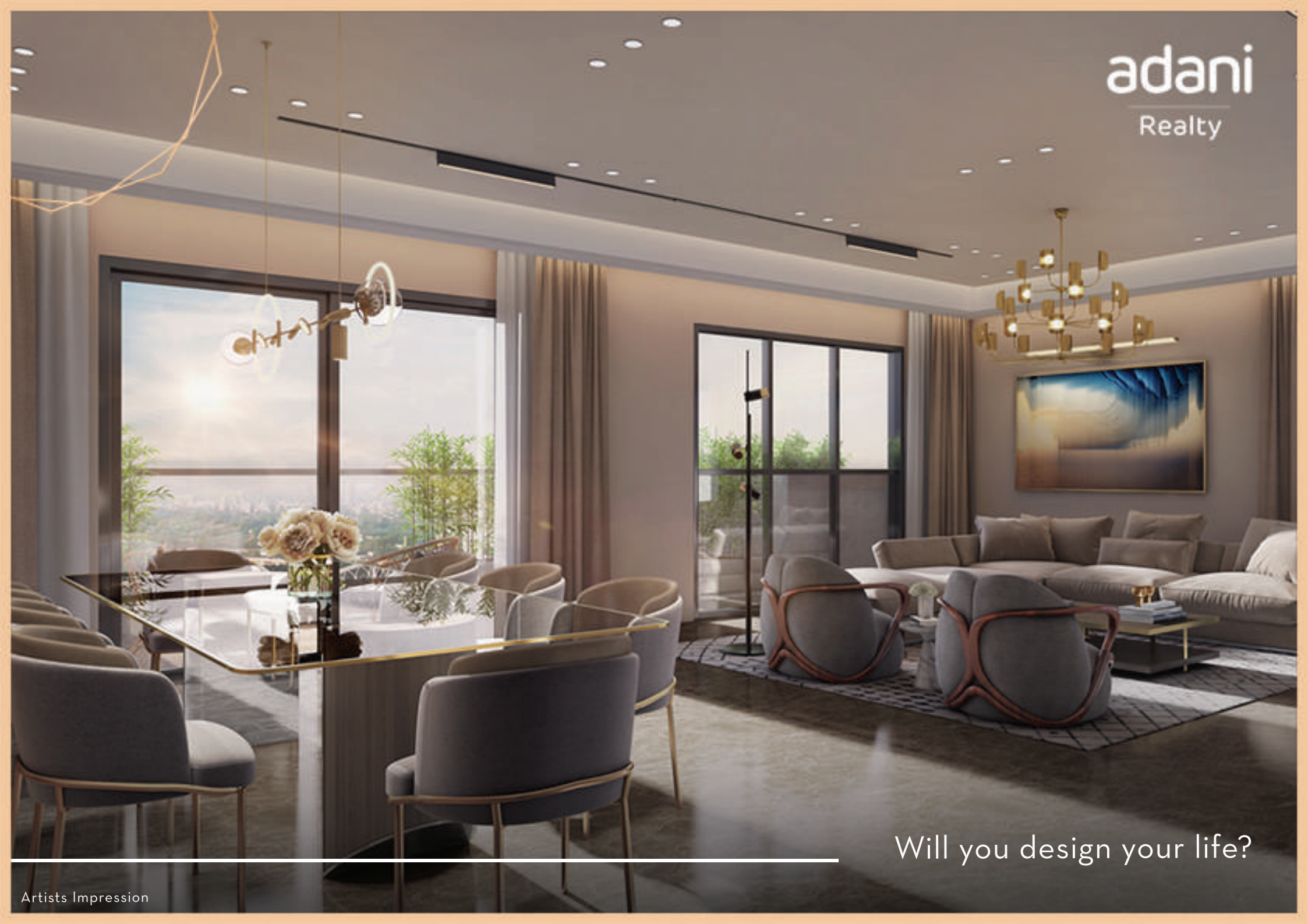
Ready to design your life?



adani  
Realty

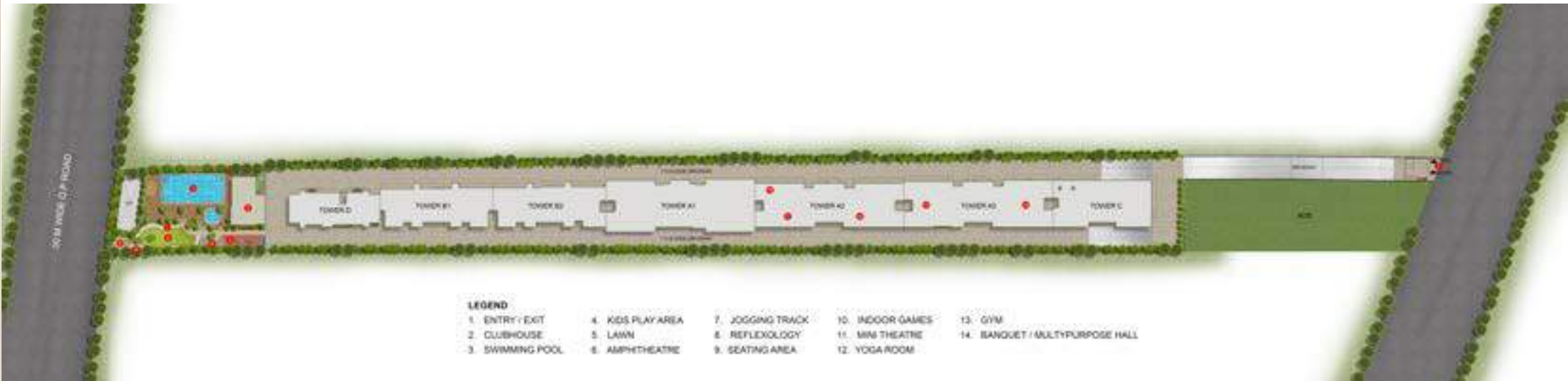
Pune's new lifestyle  
destination is calling.

Artists Impression



Will you design your life?

M A S T E R P L A N





DESIGN YOUR LIFE



RERA number : P52100018596 | [maharera.mahaonline.gov.in](https://maharera.mahaonline.gov.in)

For Enquiries, Call: 1800 108 0009.

Email: [info@adanirealty.com](mailto:info@adanirealty.com)

The project has been registered under MahaRERA registration numbers P52100018596 and is available on the website <https://maharera.mahaonline.gov.in> under registered projects. This advertisement is pertaining to only tower C and A3 only. Booking is subject to acceptance of T&Cs of Application Form and Agreement for Sale. The Project is funded by Indusind Bank.